


WORKPLACE HEALTH & SAFETY IS A TWO WAY STREET

EMPLOYERS  WORKERS

PREVENTION IS A SHARED RESPONSIBILITY



THE WORKPLACE IS A COLLABORATIVE EXCHANGE

Employers must...



Make the rules understandable.

Workers must...



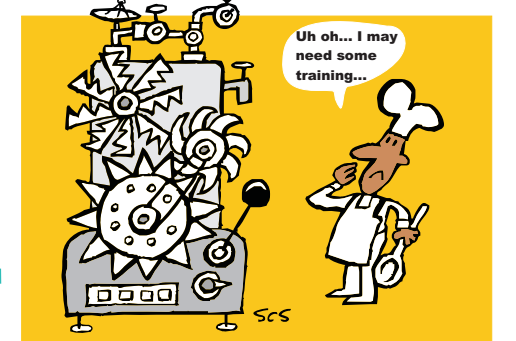
Make sure they understand the rules.

Employers must...



Respond to worker health & safety concerns.

Workers must...



Speak up. Ask questions. Raise concerns about health & safety.

Employers must...



Provide a clean & safe workplace.

Workers must...



Practice good housekeeping.

Employers must...



Clearly label any unsafe conditions.

Workers must...



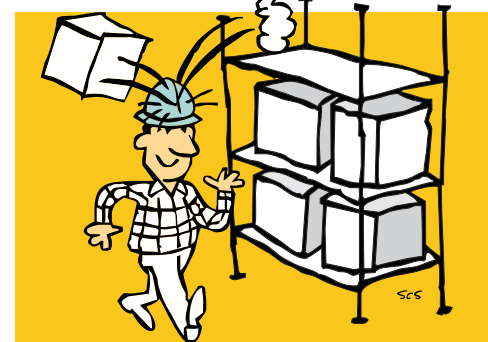
Pay attention to surroundings.

Employers must...



Provide Protection.

Workers must...



Wear & use the protective gear.

Employers must...



Provide clear first aid & emergency procedures.

Workers must...



Report injuries & close calls to their supervisor.

Employers must...



Provide safety training.

Workers must...



Follow safety procedures.

Employers must...



Tell workers about hazards & dangers.

Workers must...



Report hazards & unsafe conditions.

Employers must...



Clearly identify hazards.

Workers must...



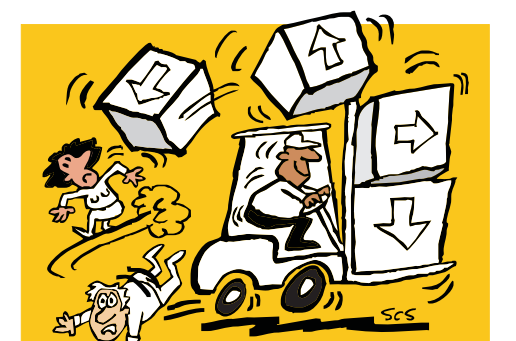
Know & obey hazard warnings.

Employers must...



Ensure safe work practices.

Workers must...



Work & act in a way that won't hurt themselves or others.

© WellWork graphics by Susan Scott draft v.2 Nov 2014

Call the Ministry of Labour at 1-877-202-008
Report critical injuries, fatalities, work refusals anytime.
Workplace health and safety information, weekdays 8:30 - 5:00pm.



Find out more:
ontario.ca/healthandsafetyatwork